

# Infected Blood Inquiry The Welsh response and impact on Surgical PBM

Dr Brian Tehan  
Consultant Anaesthetist BCUHB  
BHNOG Chair



# Infected Blood Inquiry (IBI)

IBI relates to blood and blood products given to patients by the NHS in the 1970s, 80s and very early 90s and the care provided to those infected and their families, carers and loved ones, described by the Inquiry as the affected.

The UK Government announced the establishment of the Inquiry in July 2017 and its final report was published on 20th May 2024.

“the worst treatment disaster in the history of the NHS”

‘The most accurate estimate is that more than 3,000 deaths are attributable to infected blood, blood products and tissue’



QR code  
here

**Welsh Government  
response through the IBI:  
Next Steps Oversight  
Group for Wales**

Chaired by the Deputy  
Chief Medical Officer

Membership includes key  
stakeholders to support  
identify actions needed to  
address the IBI  
recommendations



# Blood Health National Oversight Group (BHNOG)

The NHS Wales Blood Health Plan (BHP) has been developed to drive the optimisation of blood health and transfusion practice in Wales.

The Plan identifies three strategic aims to achieve this:

1. Support individuals to manage their blood health and wellbeing avoiding unnecessary intervention.
2. Use evidence and data to inform planning, improve practice and reduce variability.
3. Place safety and quality at the core of care reducing inappropriate use and promoting innovation.

The Blood Health National Oversight Group was established in 2017 to oversee the implementation of the Blood Health Plan. The BHNOG plays a strategic leadership role for transfusion across Wales.



QR code  
here

# IBI recommendation 7: Patient Safety: Blood Transfusions

- Improve governance related to transfusion safety
- Need for data and digitisation
- Mandatory Transfusion Education
- All Wales Surgical Checklist incorporating PBM
- Welsh Government endorse application of PBM

SBAR mapping  
BHNOG activities and  
Recommendation 7

SBAR approved by IBI  
Oversight Group

- Presented to Medical Directors Group for Awareness
- Utilised by WG as part of the first UK Response to the IBI Report
- [First IBI UK response](#)

- Welsh representation on UK IBI recommendation working groups to ensure collaborative working
- Welsh Health Circulars issued to outline actions needed to support the recommendations
- Final response is about to be published in line with the anniversary of – including ongoing timelines to meet the recommendations

Current Position

# IBI recommendations: Impacts on Surgical Patient Blood Management

## Findings from the Inquiry:

***‘Failing to tell people of the risks of treatment and of available alternative treatments, thus treating them without their informed consent’***

***‘Failing to make maximum use of alternatives to transfusion’***

***‘Giving too many transfusions when they were not clinically needed, or when less would have sufficed, or over-riding a patient’s wish not to be transfused’***

***‘Failing to take sufficient and timely steps to ensure the better use of blood by hospitals and clinicians’***



# IBI recommendations: Impacts on Surgical Patient Blood Management



Llywodraeth Cymru  
Welsh Government

Cymraeg



[Home](#) > [Health and social care](#) > [Medicines and medical devices](#) >

Tranexamic acid use: recommendation 7a of the Infected Blood Inquiry (IBI) (WHC/2025/017)

POLICY AND STRATEGY

## Tranexamic acid use: recommendation 7a of the Infected Blood Inquiry (IBI) (WHC/2025/017)

Directions to local health boards, NHS trusts and primary care providers on the implementation of the use of tranexamic acid.

[Read details](#)

Part of: [Health circulars: 2024 to 2027 and Medicines and medical devices](#)

First published: 12 May 2025

Last updated: 12 May 2025

**Use of TXA to prevent blood loss is one element of patient blood management (PBM)** and there should be consideration of the breadth of PBM to further enhance patient safety related to blood transfusion particularly within the surgical setting.

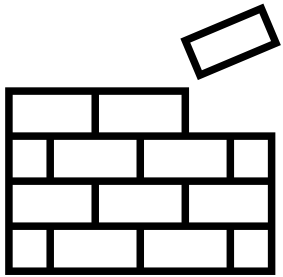
To support this, I would be grateful if the following were endorsed and actioned within local health boards and NHS trusts:

continue to support **implementation of the NHS Wales Preoperative Anaemia Pathway**

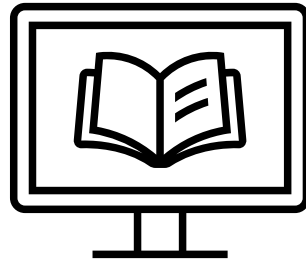
include **intraoperative cell salvage (ICS)** on surgical checklists

# IBI recommendations: Impacts on Surgical Patient Blood Management

## Next Steps:



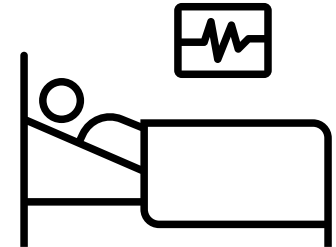
**Build on  
current  
successes**



**Educate and raise  
the importance of  
Patient Blood  
Management**



**Expand our  
network of  
collaboration**



**Maintain a  
patient  
centric  
approach**



IBI

Recommendations:  
Impacts on Surgical  
Patient Blood  
Management

**Thank You**